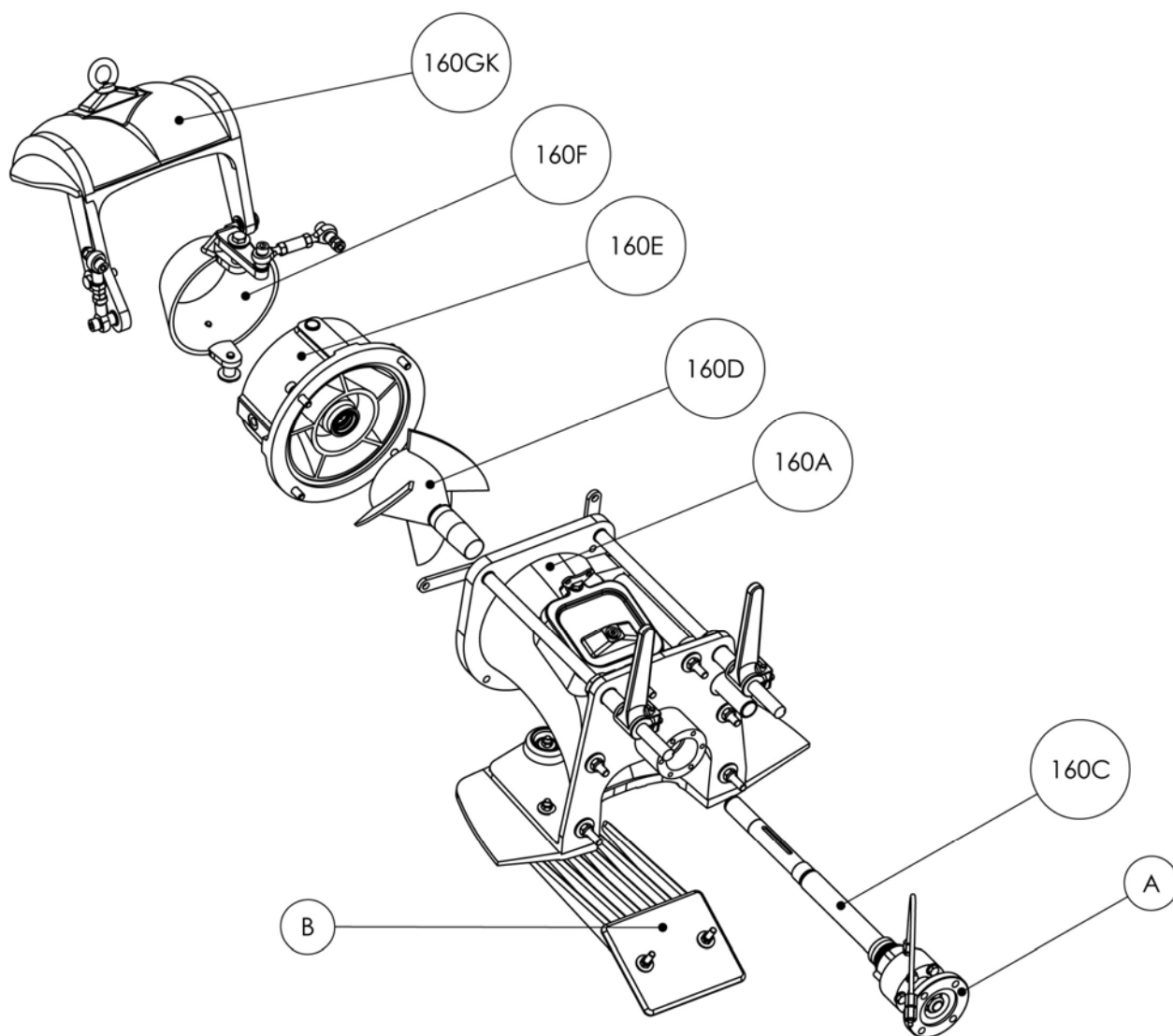


**Main exploded view**

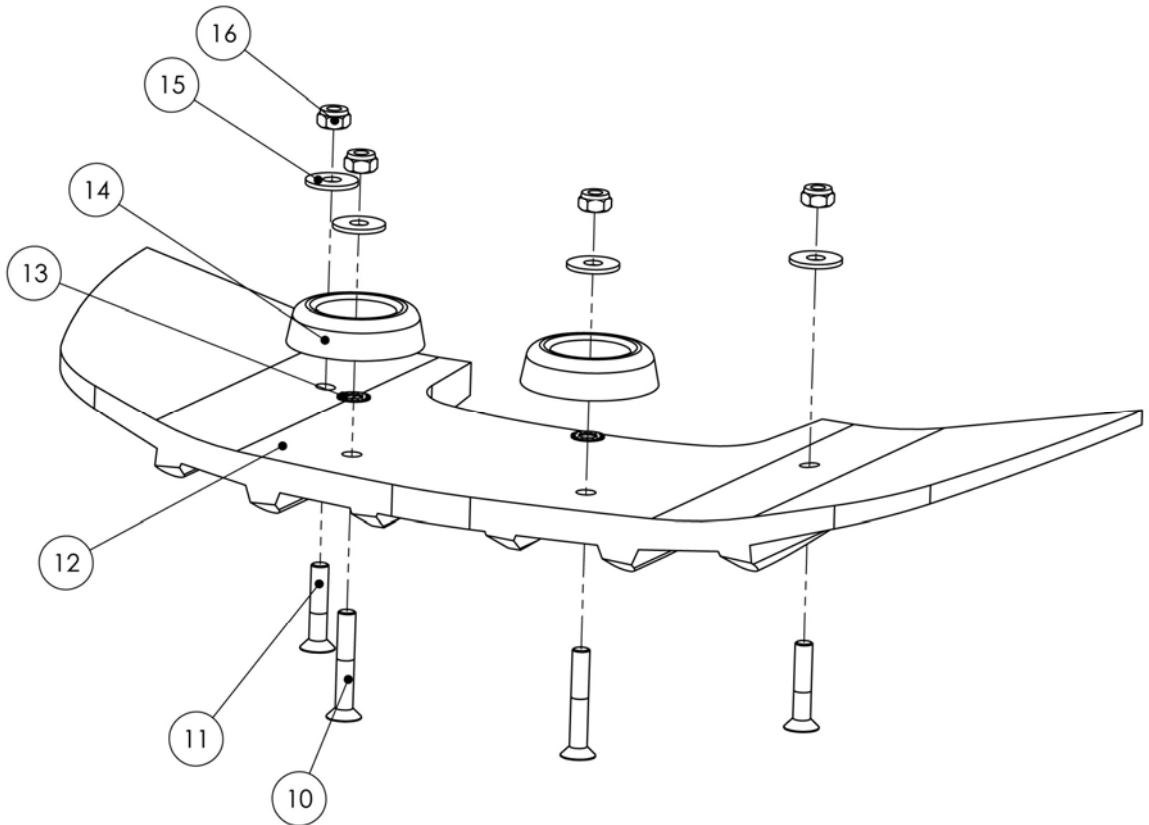
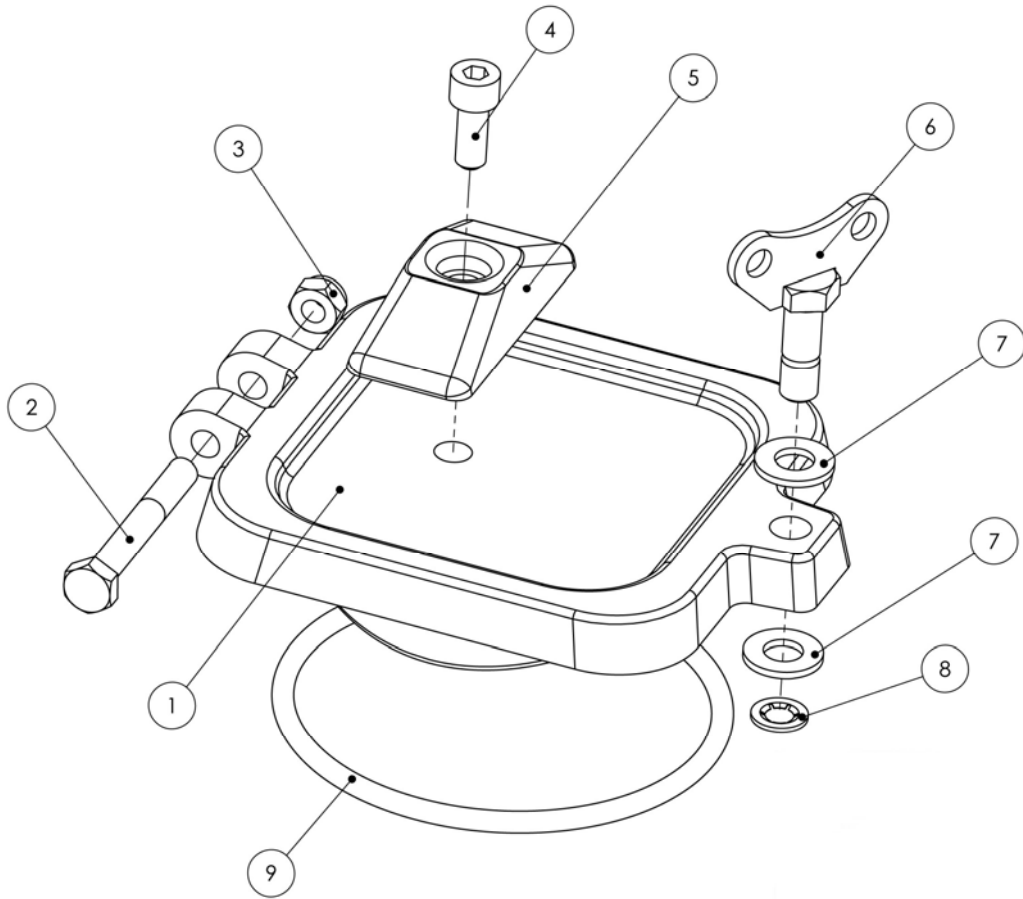
Code	Name
160A	Frame 160
160C	Bearing and impeller shaft
160D	Impeller
160E	Stator
160F	Steering nozzle
160GK	Round reverse bucket
A	Flange
B	Intake screen

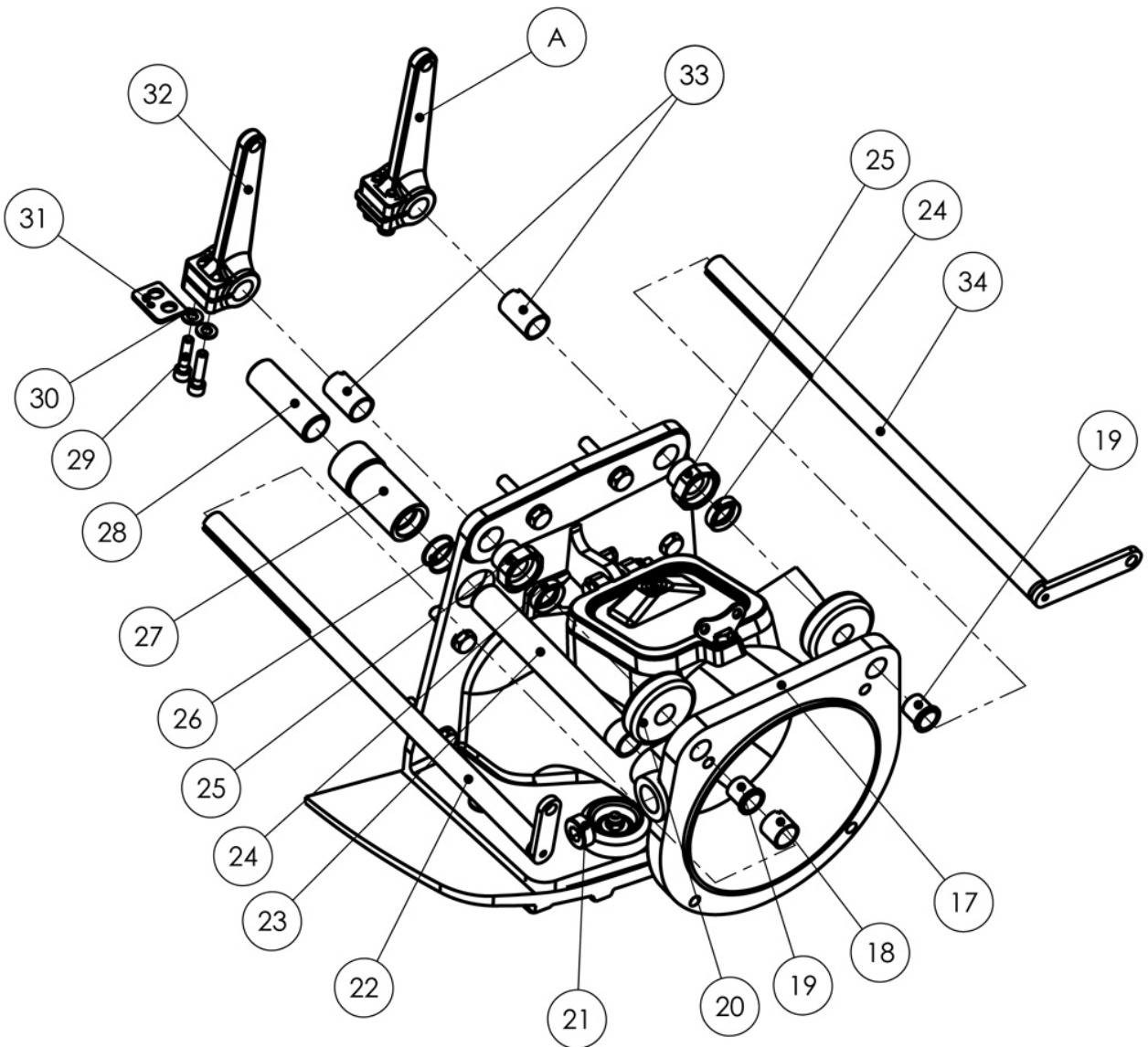


**160A Frame**

<b>Pos.</b>	<b>Code</b>	<b>Name</b>	<b>Qty</b>
1	10158	Inspection hatch	1
2	R04080602-1	Hexagonal head screw M8	1
3	R31080002	Nyloc M8	1
4	R01080202	Hexagonal socket head screw M8	1
5	10053	Zinc anode	1
6	10089	Wing screw M10	1
7	R10100002	Washer M10	2
8	L0403	Locking ring	1
9	T0000100	O-ring	1
10	R02080502	Hexagonal socket head screw M8	2
11	R02080402	Hexagonal socket head screw M8	2
12	10163	Cavitation plate	1
13	R12080002	Washer M8	2
14	10054	Zinc anode	2
15	R11080002	Washer M8	4
16	R31080002	Nyloc M8	4
17	10172	Frame 160	1
18	10327	Sleeve	3
19	H0403	Plastic bearing	2
20	K0538	Zinc anode	2
21	R50340002	Plug	1
22	10178	Steering shaft	1
23	10135	Raw water pipe	1
24	T9900021	Shaft seal	2
25	10110	Lead-in	2
26	T0000027	O-ring	2
27	10033	Raw water lead-in	1
28	10095	Raw water coupling	1
29	R01080352	Hexagonal socket head screw M8	4
30	R10080002	Washer M8	4
31	10168	Wedge plate	2
32	10166	Steering lever	2
33	10034	Sleeve	1
34	10177	Control shaft	1
A	*	Control lever	1

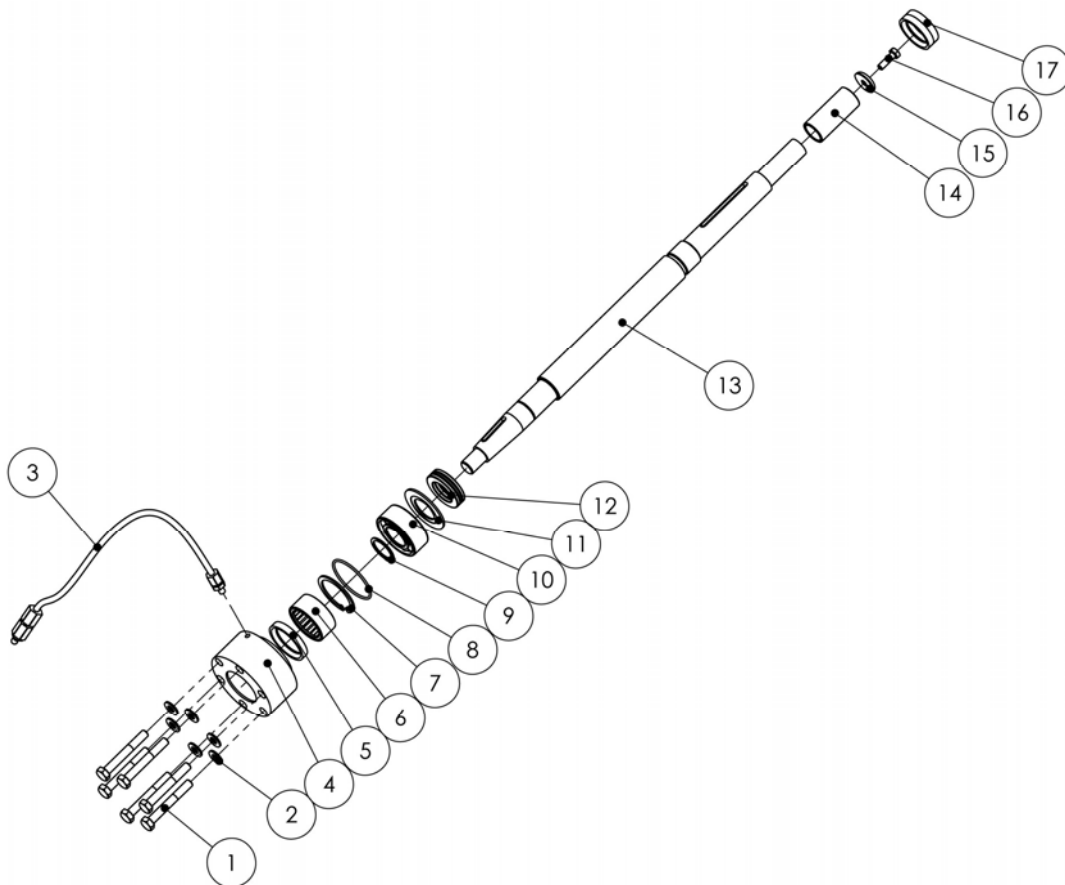
\* Code depends on the length.





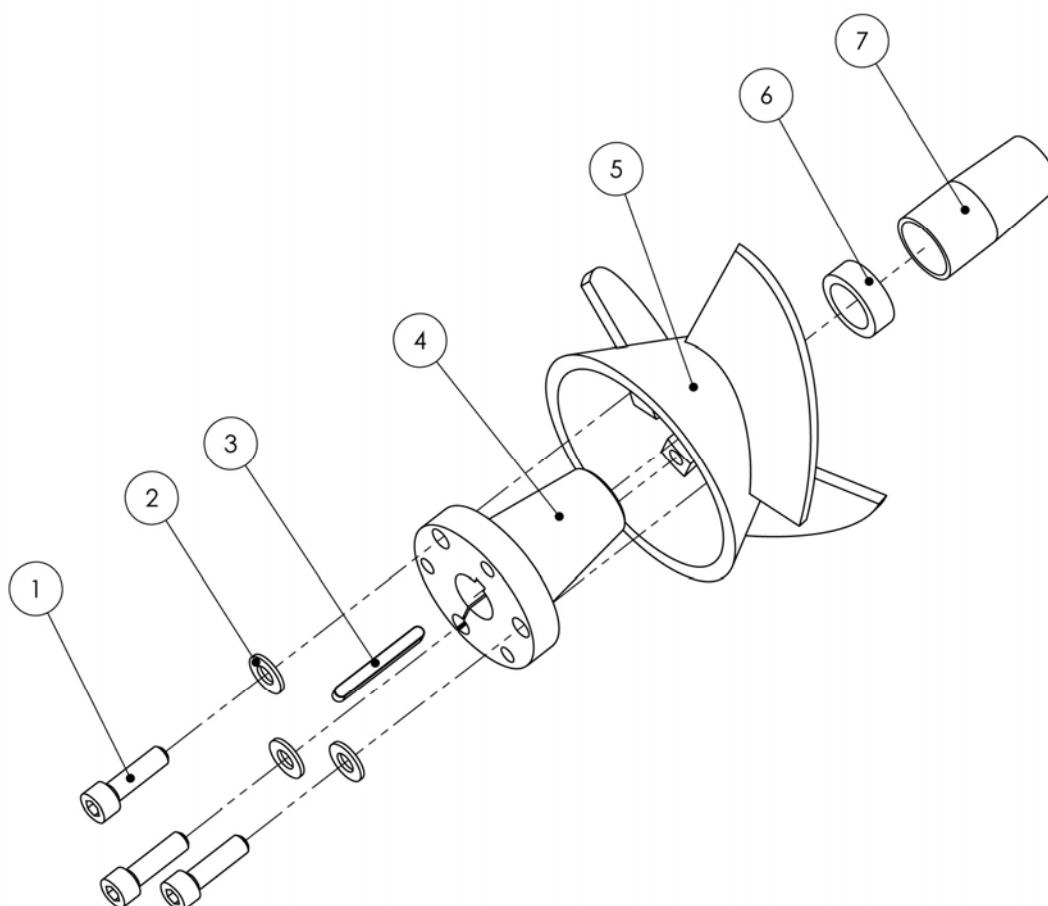
**160C Impeller shaft**

Pos.	Code	Name	Qty
1	R04080602-1	Hexagonal head screw M8	6
2	R10080002	Washer M8	6
3	10018	Grease tube	1
4	10181	Support bearing housing 160	1
5	T9900031	Shaft seal	1
6	L0140	Bearing	1
7	L0452	Locking ring	1
8	T0000041	O-ring	1
9	L0402	Locking ring	1
10	L0121	Bearing	1
11	10183	Washer	1
12	L0150	Bearing	1
13	10180	Impeller shaft	1
14	10016	Shaft sleeve	1
15	10017	Locking plate	1
16	R04060202	Hexagonal head screw M6	1
17	T9900030	Shaft seal	2



**160D Impeller**

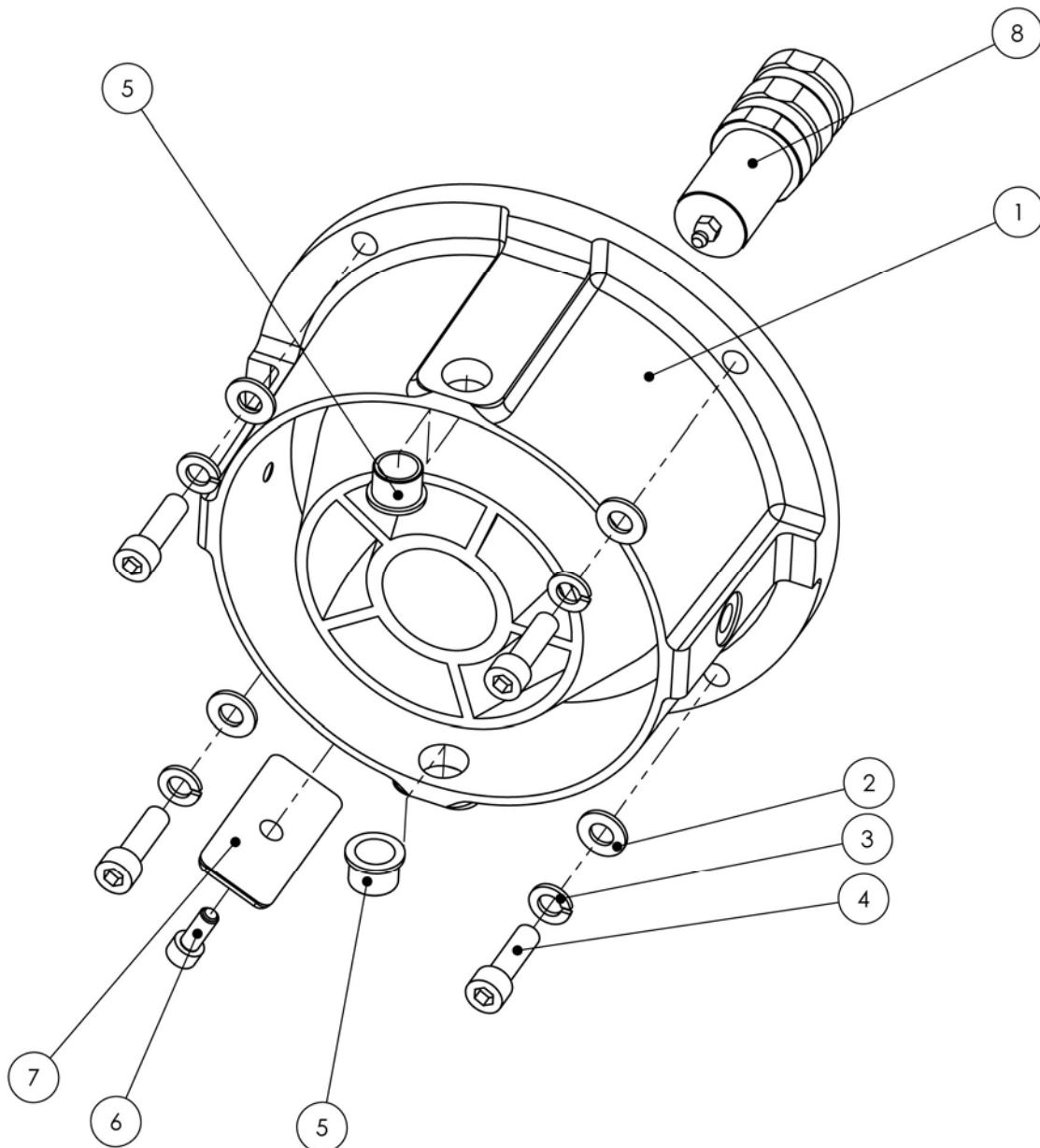
Pos.	Code	Name	Qty
1	R01100352	Hexagonal socket head screw M10	3
2	R10100002	Washer M10	3
3	K0203	Key	1
4	10169	Impeller mounting cone 160,180	1
5	*	Impeller	1
6	10170	Extension for adjuster sleeve	1
7	10081	Adjuster sleeve	1



\* Depends on used engine's horsepower and torque curve. Pos. 6. ja 7. depends on used impeller.

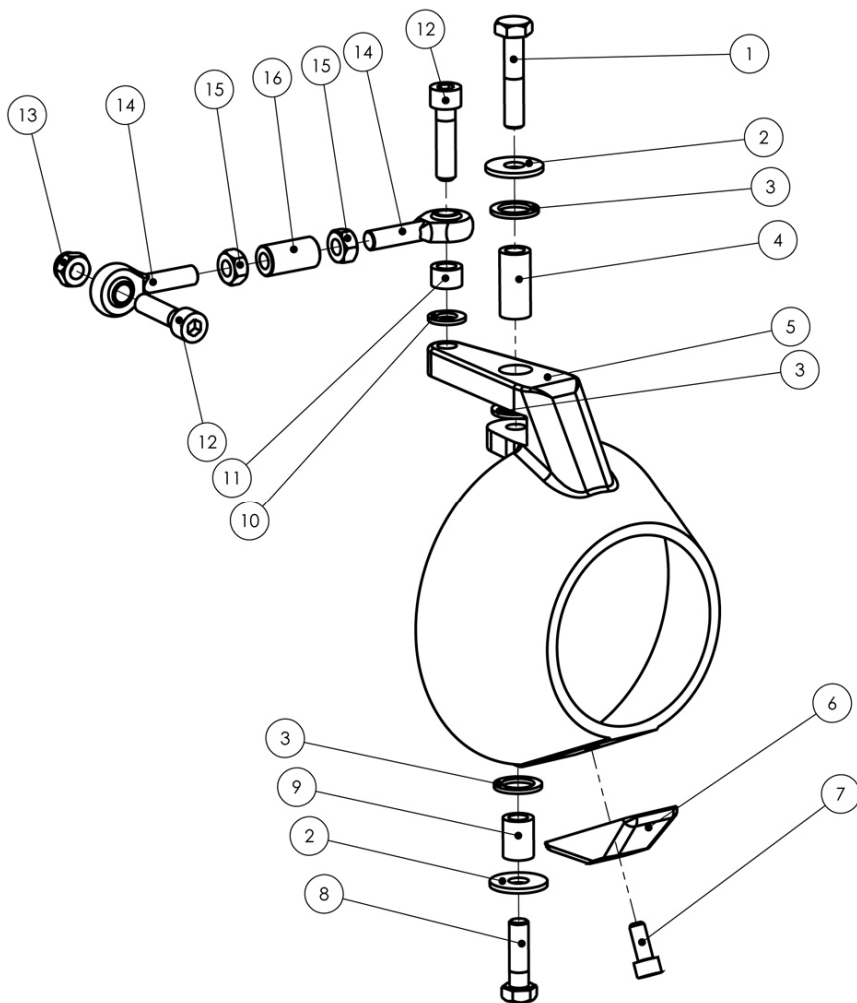
**160E Stator**

Pos.	Code	Name	Qty
1	10184	Stator 160	1
2	R10100002	Washer M10	4
3	R13100002	Washer M10	4
4	R01100352	Hexagonal socket head screw M10	4
5	H0401	Plastic bearing	2
6	R01080202	Hexagonal socket head screw M8	1
7	10053	Zinc anode	1
8	10161	Rear bearing 160/180	1



**160F Steering nozzle**

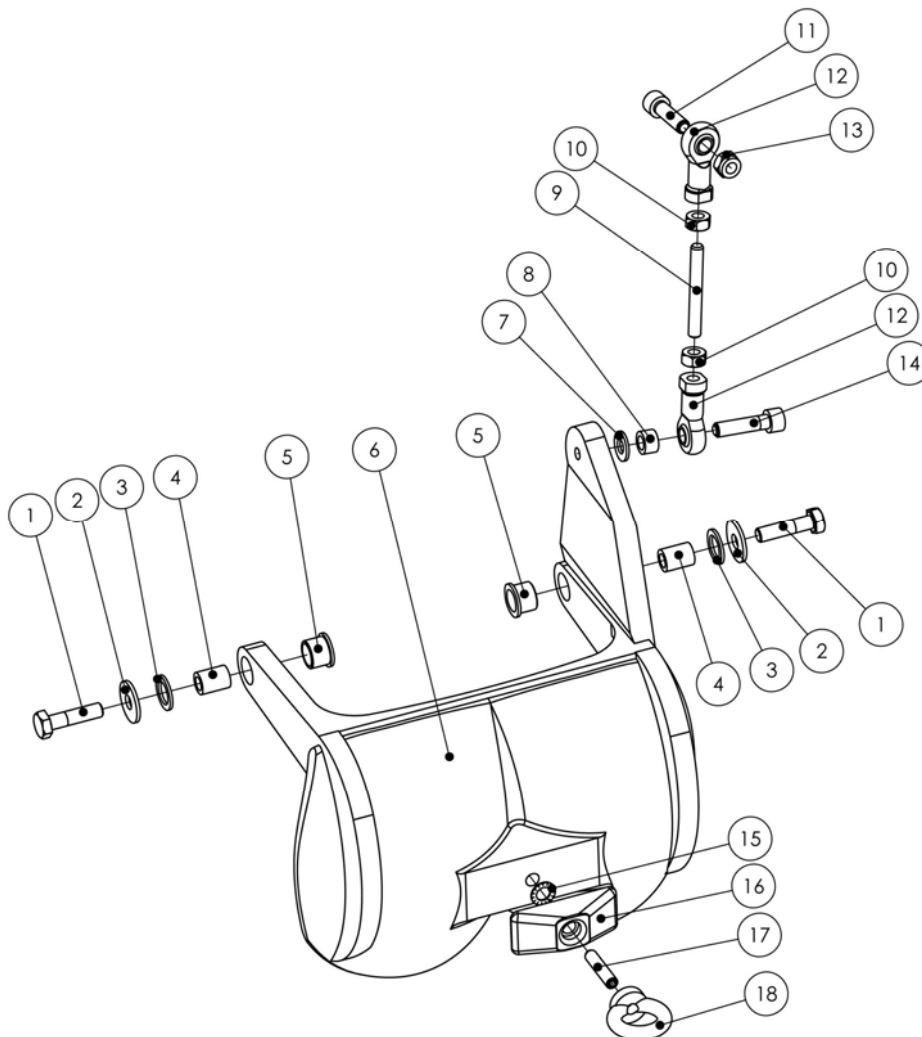
Pos.	Code	Name	Qty
1	R04100502	Hexagonal head screw M10	1
2	R11100002	Washer M10	2
3	H0301	Plastic washer	3
4	10028	A4 sleeve	1
5	10185	Steering nozzle 160	1
6	10053	Zinc anode	1
7	R01080202	Hexagonal socket head screw M8	1
8	R04100352	Hexagonal head screw M10	1
9	10026	A4 sleeve	1
10	R10100002	Washer M10	1
11	10025	A4 sleeve	2
12	R01100402	Hexagonal socket head screw M10	2
13	R31100000	Nyloc M10	1
14	RM10SEJR316	Eye joint	2
15	R30100002	Nut M10	2
16	10143	Joint sleeve	1





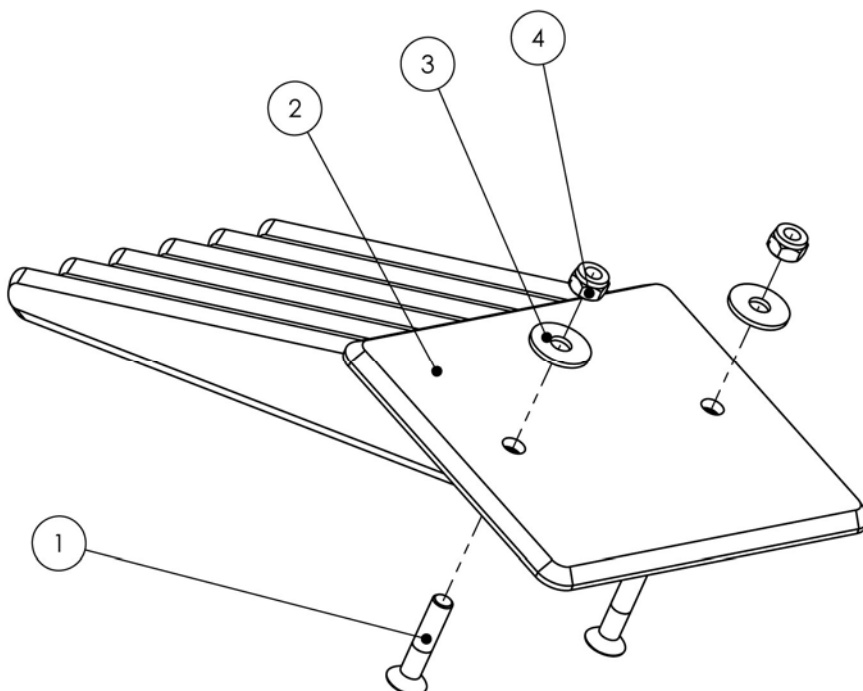
**160GK Round reversing deflector**

Pos.	Code	Name	Qty
1	R04100402	Hexagonal head screw M10	2
2	R11100002	Washer M10	2
3	H0301	Plastic washer	2
4	10026	A4 sleeve	2
5	H0401	Plastic bearing	2
6	10186	Round reversing deflector 160	1
7	R10100002	Washer M10	1
8	10025	A4 sleeve	1
9	R05100702	Screw M10	1
10	R30100002	Nut M10	2
11	R01100352	Hexagonal socket head screw M10	1
12	RF10SEJR316	Eye joint	2
13	R31100000	Nyloc M10	1
14	R01100402	Hexagonal socket head screw M10	1
15	R12100002	Washer M10 A4	1
16	10053	Zinc anode	1
17	R05100402	Screw M10X40 A4	1
18	R60100000	Lifting eye M10	1



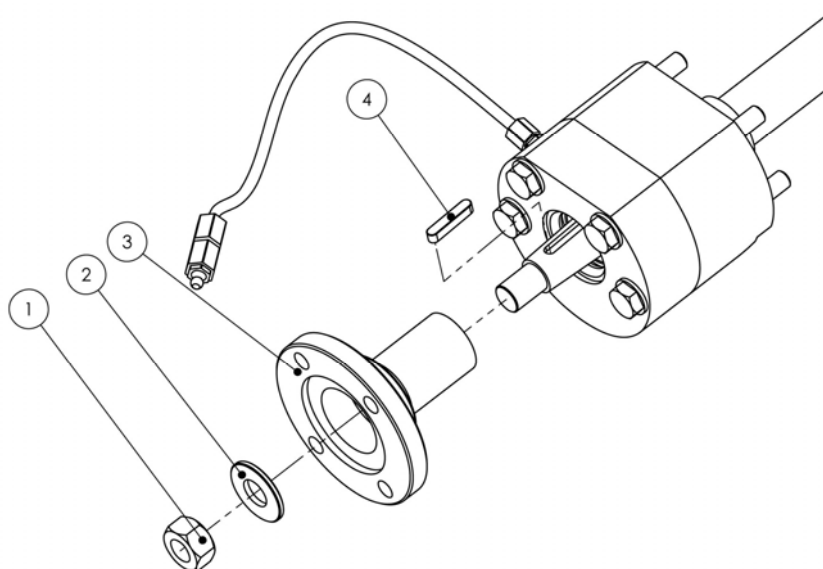
**A. Intake screen**

Pos.	Code	Name	Qty
1	R02080402	Hexagonal socket head screw M8	2
2	10190	Intake screen 160	1
3	R11080002	Washer M8	2
4	R31080002	Nyloc M8	2



**B. Flange**

Pos.	Code	Name	Qty
1	R30160002	Nut M16	1
2	R11361632	Washer	1
3	*	Flange	1
4	K0201	Key	1



**\*Flange is chosen according to intermediate shaft.**

Type	Code	Shaft
SAE-1310	10165	Cardan shaft
CV-joint 10	10335	CV-joint 10 type 1
CV-joint 10	10191	CV-joint 10 type 2

**By using adapter flange you can use other type of intermediate shaft.**