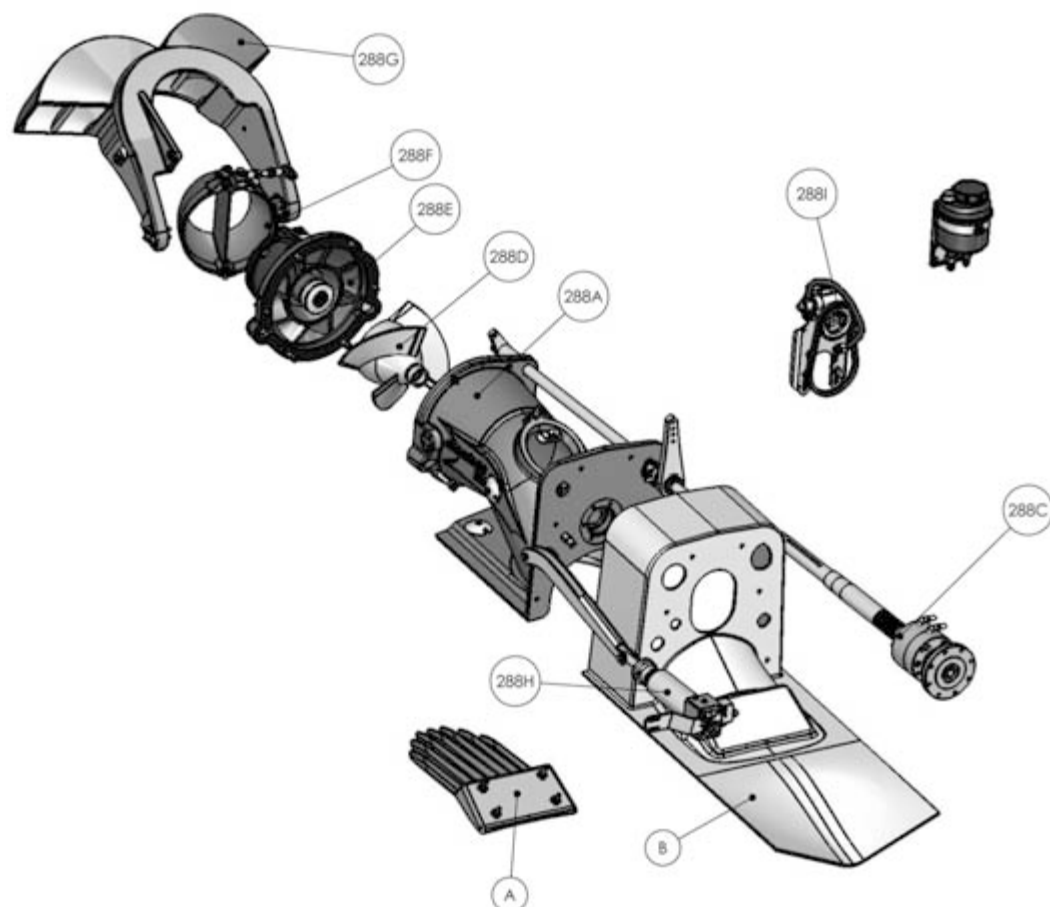
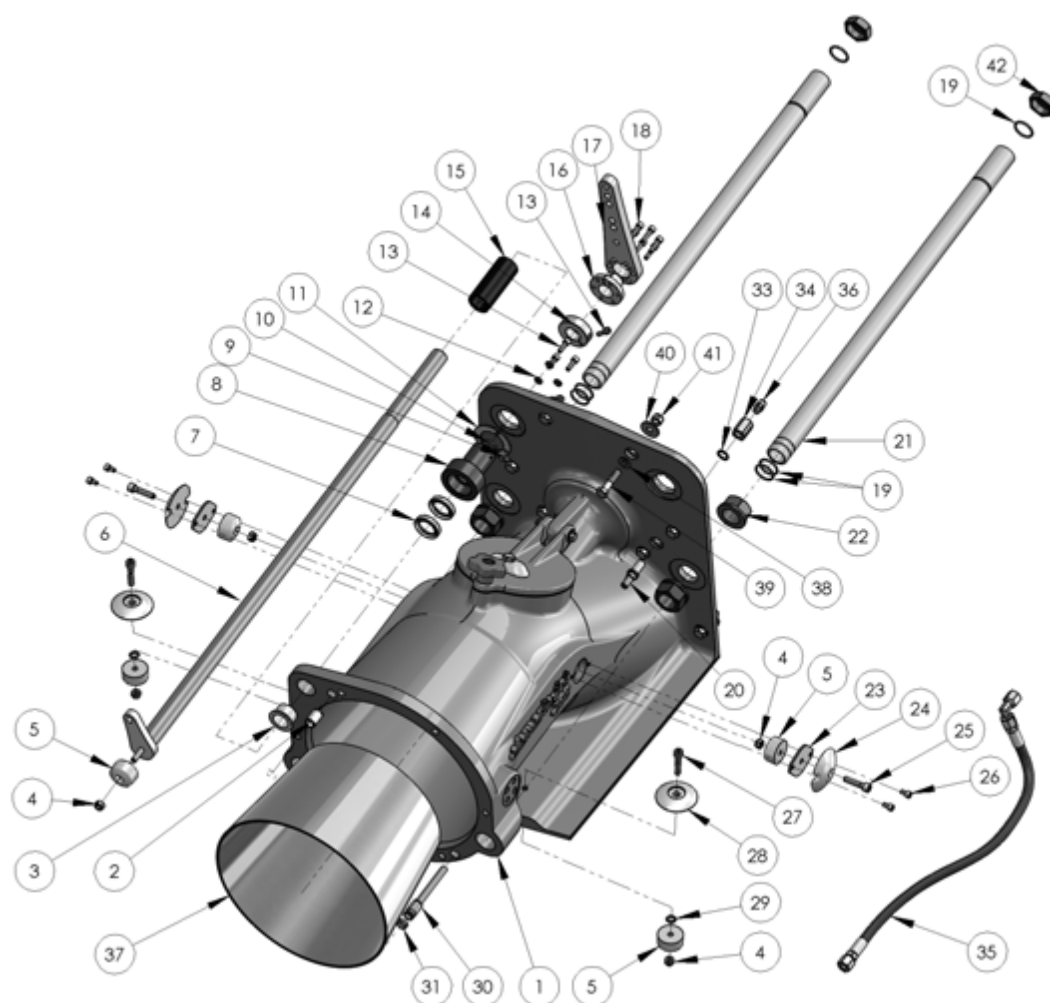


1. Main structure



Code	Name
288A	Body
288C	Bearings and impeller shaft
288D	Impeller
288E	Stator
288F	Steering nozzle
288G	Reversing deflector
288H	Hydraulic cylinder
288I	Hydraulic pump and oil reservoir
A	Grass rake
B	Mounting template

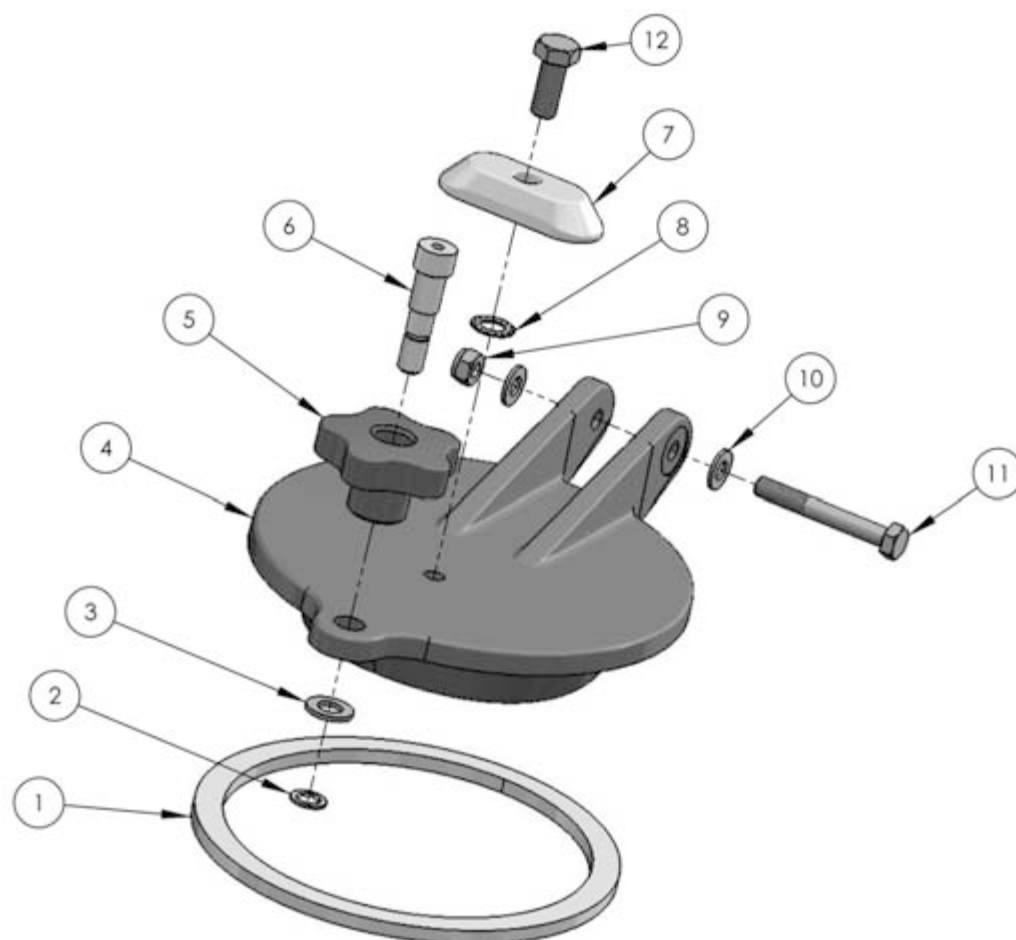
2. 288A Body



No.	Name	Code	Pcs
1	Body AJ 288	10352	1
2	Control peg	10578	1
3	Steering shaft bearing	10410	1
4	Locking nut M8	R31080002	5
5	Anode	10409	5
6	Steering shaft	10401	1
7	Radial shaft seal	T9900022	2
8	Bushing sleeve, steering shaft	10280	1
9	Grease nipple	P0403	1
10	O-ring	T0000026	1
11	Bushing sleeve seal	10414	1
12	Washer M6	R10060002	3
13	Socket screw M6	R01060202	4
14	Locking ring	10479	1

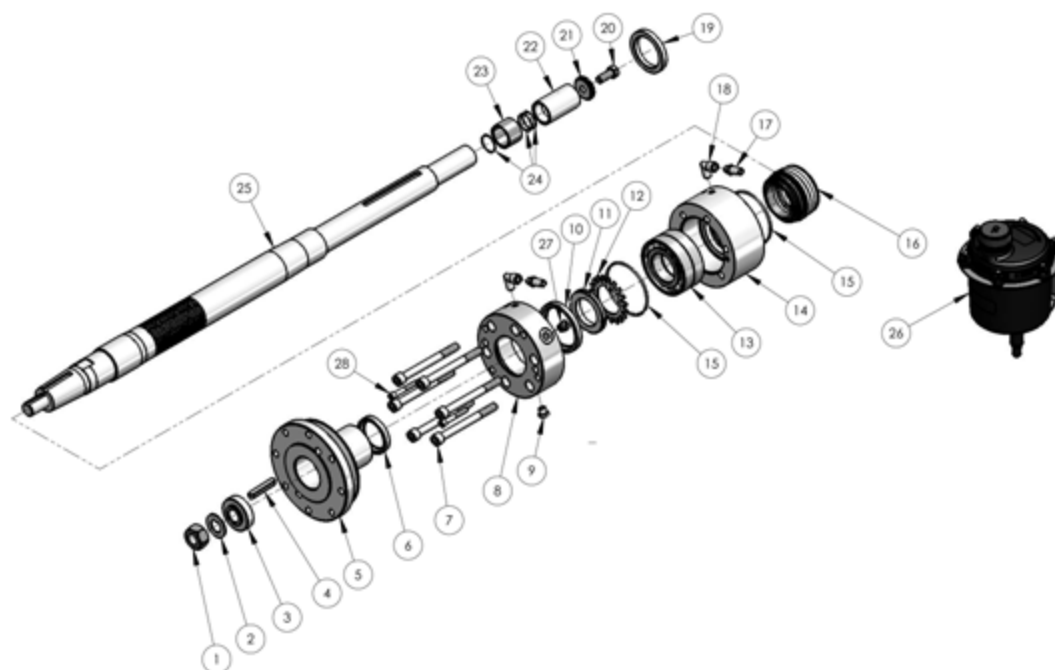
No.	Name	Code	Pcs
15	Retaining sleeve	10405	1
16	Cone sleeve inner ring	10499	1
17	Steering lever	10498	1
18	Socket screw M6	R01060252	6
19	O-ring	T0000028	6
20	Lubrication clamp	10425	1
21	Raw water hose	10369	2
22	Nut	10372	4
23	Attachment plate	10397	2
24	Anode	10408	2
25	Socket screw M8	R01080352	2
26	Socket screw M6	R01060102	4
27	Socket screw M8	R01080402	2
28	Zinc anode	10054	2
29	Tooth spacer M8	R12080002	2
30	Control peg	10426	1
31	O-ring	T0000013	2
32	Hex screw M10	R04100252	1
33	Copper seal	P0372	1
34	Reducing nipple	10919	1
35	Lubrication channel	P9903	1
35.1	HST Casing nut	P0348	2
35.2	HST Cutting ring	P0202	2
35.3	HST Variable angle	P0503	1
35.4	Hose assembly	P0110	1
36	Straight connector	P0505	1
37	Cone 288	10728	1
38	Base plate M10	R10100002	8
39	Hex screw M10	R04100452	8
40	Body spacer M10	R11100002	8
41	Locking nut M10	R31100002	8
42	Cap with seal	P0347	2

3. Inspection hatch



No.	Name	Code	Pcs
1	Inspection hatch seal	10411	1
2	Locking plate for the shaft	L0403	1
3	Base plate M10	R10100002	1
4	Inspection hatch cover	10353	1
5	Hand wheel M12	K0601	1
6	Screw	10403	1
7	Zinc anode	10053	1
8	Tooth spacer M10	R12100002	1
9	Locking nut M8	R31080002	1
10	Base plate M8	R10080002	2
11	Hex screw M8	R04080602-1	1
12	Hex screw M10	R04100252	1

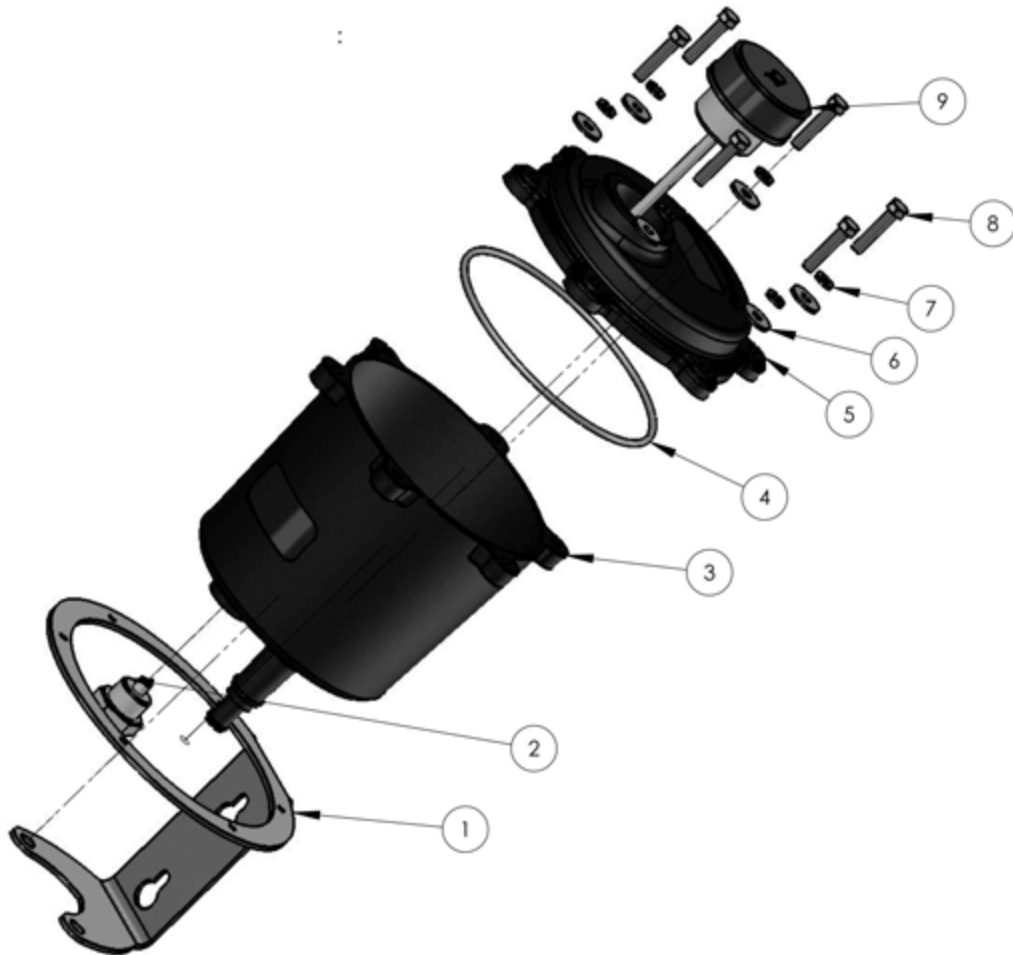
4. 288C Bearings and impeller shaft



No.	Name	Code	Pcs
1	Hex nut M20	R30200002	1
2	Locking plate M20	L0406	1
3	Coupling flange spacer	10359	1
4	Wedge	K0205	1
5	Coupling flange	10406	1
6	Radial shaft seal	T425508A	1
7	Socket screw M10	R01101102	6
8	Bearing housing cover	10356	1
9	Hexagonal stopper	P0342	1
10	Radial shaft seal	T607508A	1
11	Spinner nut	L0209	1
12	Lock plate	10418	1
13	Angular ball bearing	L0123	2
14	Bearing housing	10355	1
15	O-ring	T0000078	2
16	Mechanical seal	T5000000	1
17	Hose shank	P0602	2
18	Bend	P0502	2
19	Support ring	10358	1
20	Hex screw M10	R04100252	1
21	Locking plate	10363	1
22	Shaft sleeve	10362	1
23	Shaft sleeve	10419	1
24	O-ring	T0000025	3

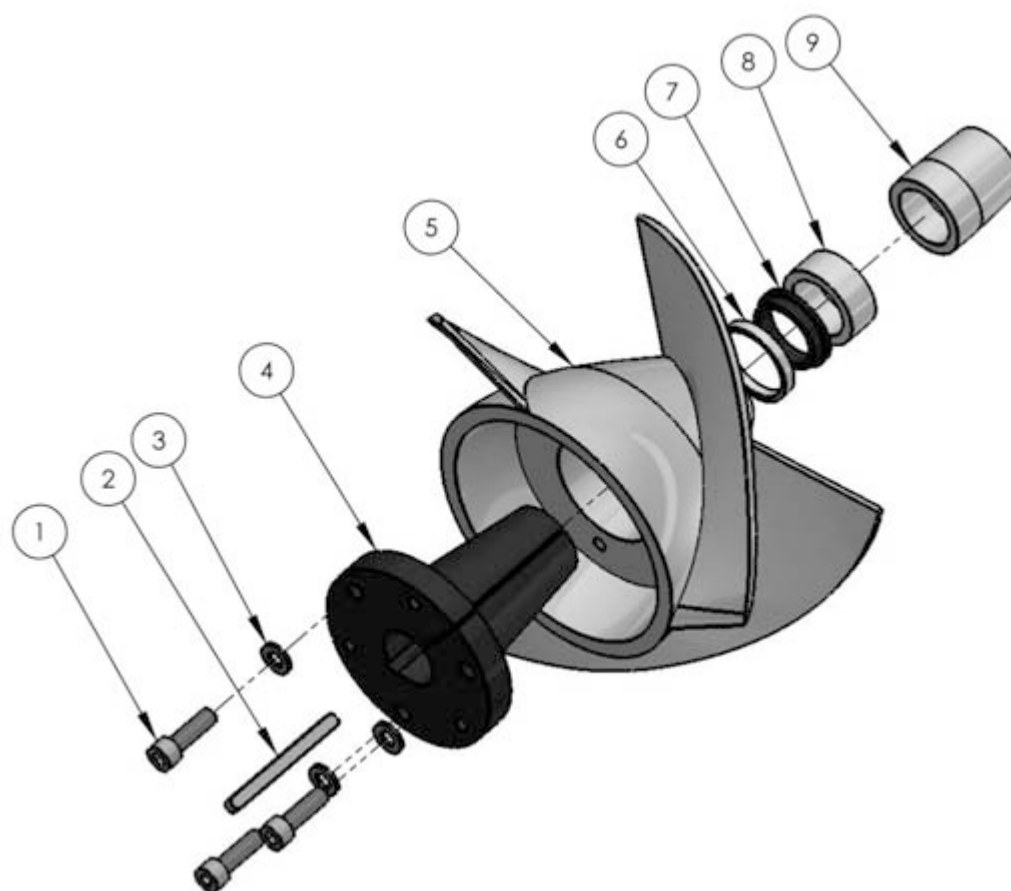
No.	Name	Code	Pcs
25	Shaft	10354	1
26	Oil reservoir	10610	1

4.1. Oil reservoir (10610)



No.	Name	Code	Pcs
1	Oil reservoir rack	10543	1
2	Magnetic plug	P0346	1
3	Oil reservoir	10535	1
4	O-ring	T0000124	1
5	Oil reservoir cover	10536	1
6	Body spacer M5	R11050002	6
7	Spring washer M5	1R13050002	6
8	Hex screw M5	R04050252	6
9	Oil reservoir cap	P0345	1

5. 288D Impeller 17"



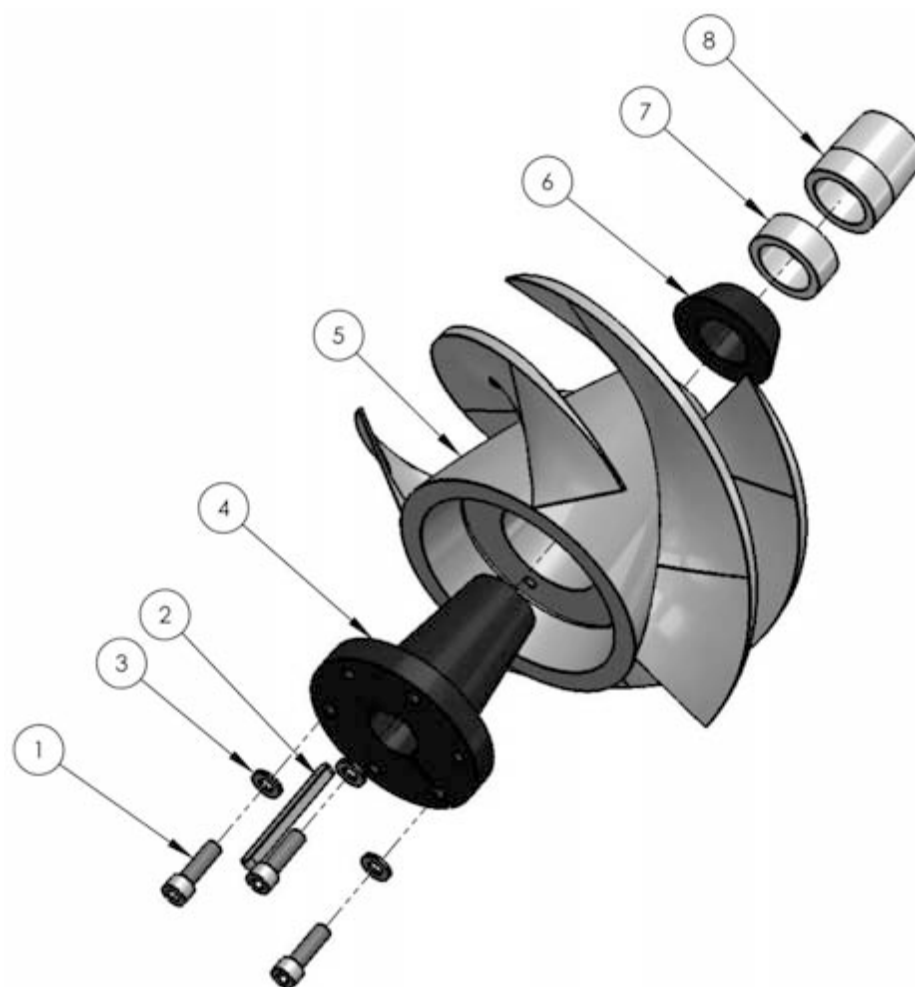
No.	Name	Code	Pcs
1	Socket screw M10	R01100352	3
2	Wedge	K0204	1
3	Base plate M10	R10100002	3
4	Fastening cone	10198	1
5	Impeller	*	1
6	Insulating ring support	10469	1
7	Insulating ring	10468	1
8	Adjuster shim	**	
9	Adjuster sleeve	10375	1

* The code is determined by the material. Bronze: 10510 Acid-proof steel: 10511

** Can include several rings or shims of different thicknesses depending on the impeller diameter.

The impeller dimensions depend on the power and speed of the engine used.

6. 288D Impeller 15" and 12"



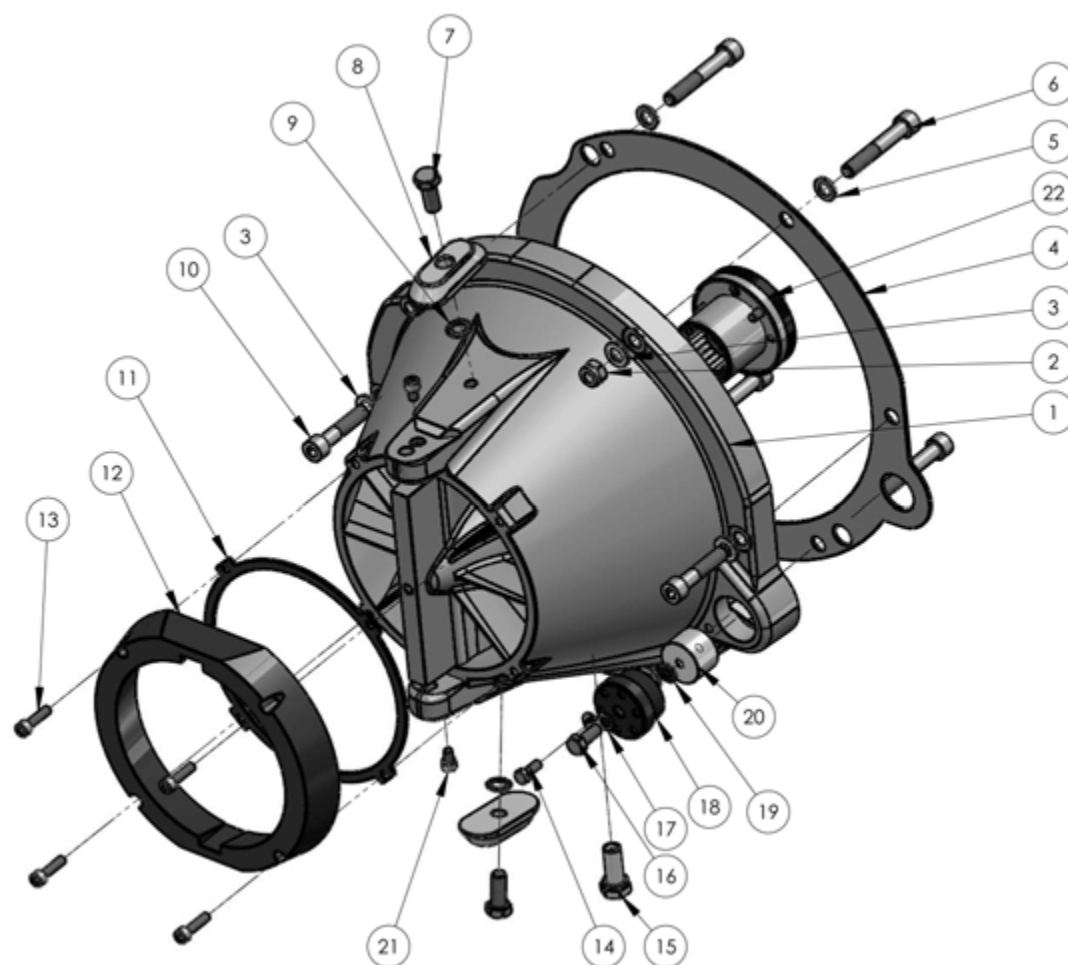
No.	Name	Code	Pcs
1	Socket screw M10	R01100352	3
2	Wedge	K0204	1
3	Base plate M10	R10100002	3
4	Fastening cone	10198	1
5	Impeller	*	1
6	Insulating ring	10513	1
7	Adjuster shim	**	
8	Adjuster sleeve	10375	1

* The code is determined by impeller type. 15" 4 blade: 10514 15" 3 blade: 10515 12" 3 blade: 10516

** Can include several rings or shims of different thicknesses depending on the impeller diameter.

The impeller dimensions depend on the power and speed of the engine used.

7. 288E Stator



No.	Name	Code	Pcs
1	Stator 288	10435	1
2	Locking nut M10	R31100002	4
3	Spacer M10	R10100002	6
4	Stator seal	10439	1
5	Spacer M10	R15100002	4
6	Socket screw M10	R01100652	4
7	Hex screw M10	R04100252	2
8	Zinc anode	10053	2
9	Tooth spacer M10	R12100002	2
10	Socket screw M10	R01100502	2
11	Nozzle seal	10456	1
12	Choker	*	1
13	Socket screw M6	R01060252	4
14	Hex screw M6	R04060162	4
15	Drain plug	10546	1
16	Hex screw M8	R04080202	2

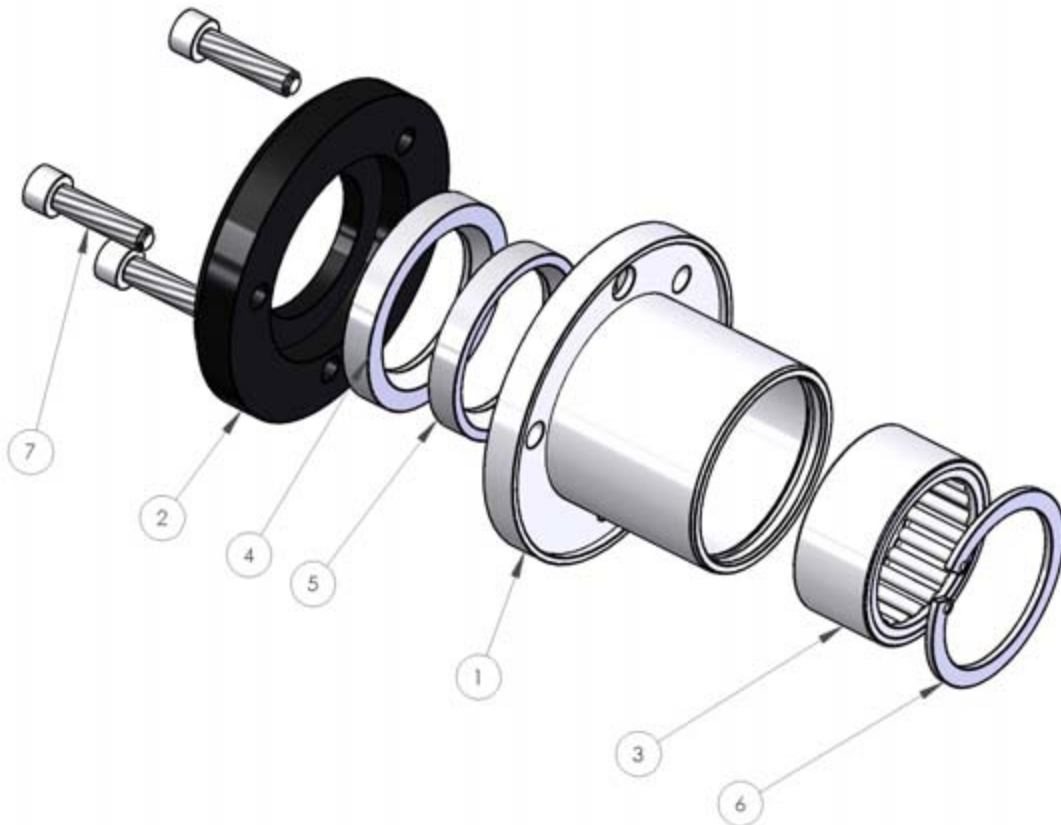
No.	Name	Code	Pcs
17	Zinc lead	10470	2
18	Zinc plug	10467	2
19	Tooth spacer M8	R12080002	2
20	Zinc anode d30	10441	2
21	Socket screw M6x10	R01060102	2
22	Rear bearing housing	10857	1

* The code is determined by the diameter.

288 impeller, choker and steering nozzle combinations

Impeller	Choker	Steering nozzle	Steering nozzle assembled
12"	10533 (D149)	10751D154	288F3
15-3"	10533 (D149)	10751D154	288F3
15-4"	10533 (D149)	10751D154	288F3
17"	10460 (D162)	10751D167	288F2

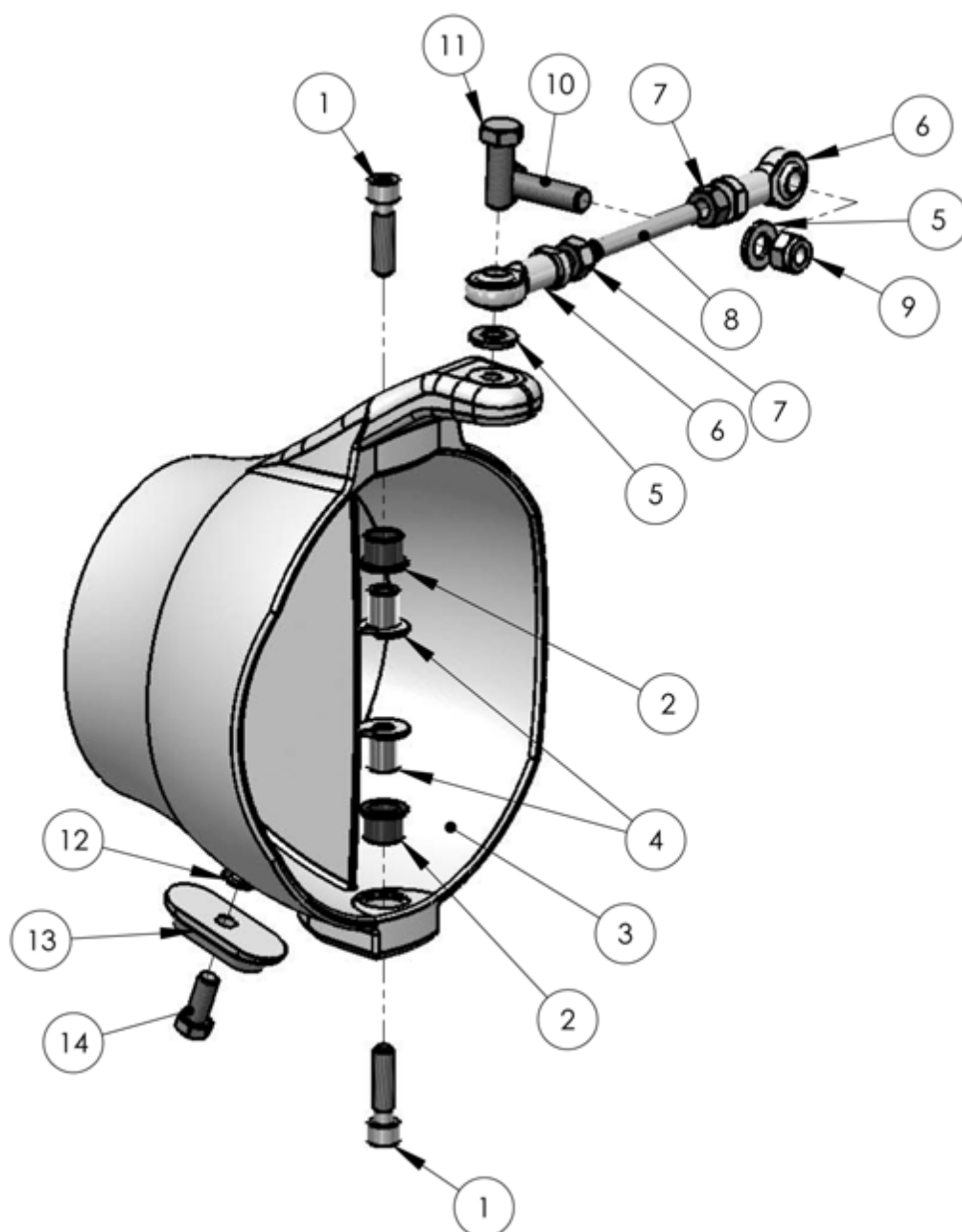
7.1. Rear bearing housing (10857)



No.	Name	Code	Pcs
1	Rear bearing housing	10855	1
2	Rear bearing housing cover	10856	1

No.	Name	Code	Pcs
3	Needle bearing	L0140	1
4	Radial shaft seal	T9900033	1
5	Radial shaft seal	T9900031	1
6	Retainer ring	L0452	1
7	Socket screw M6	R01060252	3

8. 288F Steering nozzle



No.	Name	Code	Pcs
1	Socket screw M10	R01100402	2
2	Compound bearing	H0401	2
3	Steering nozzle	*	1
4	Joint peg	10616	2
5	Spacer M12	R10120002	2
6	Ball joint M12	K0400	2
7	Hex nut M12	R30120002	2
8	Clamping screw M12	R06120802	1

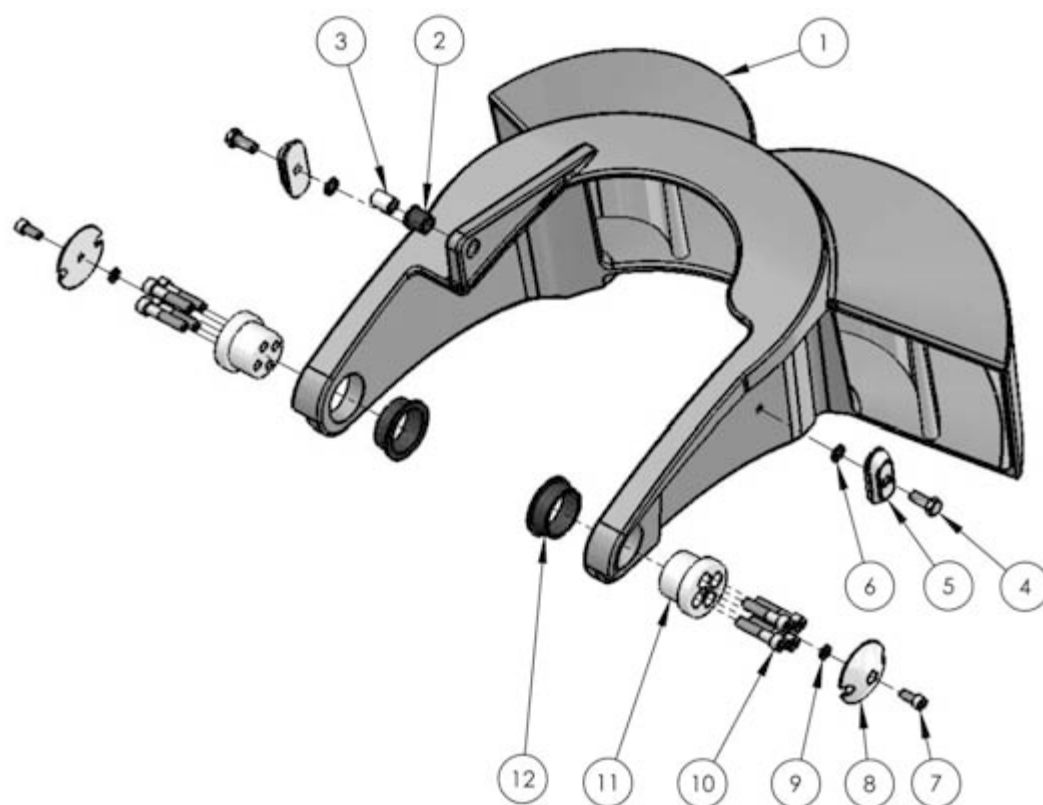
No.	Name	Code	Pcs
9	Locking nut M12	R31120002	1
10	Hex screw M12	R04120452	1
11	Hex screw M12	R04120352	1
12	Tooth spacer M10	R12100002	1
13	Zinc anode	10053	1
14	Hex screw M10	R04100252	1

* The code depends on the impeller and choker used. Check the correct type from the manufacturer.

288 impeller, choker and steering nozzle combinations

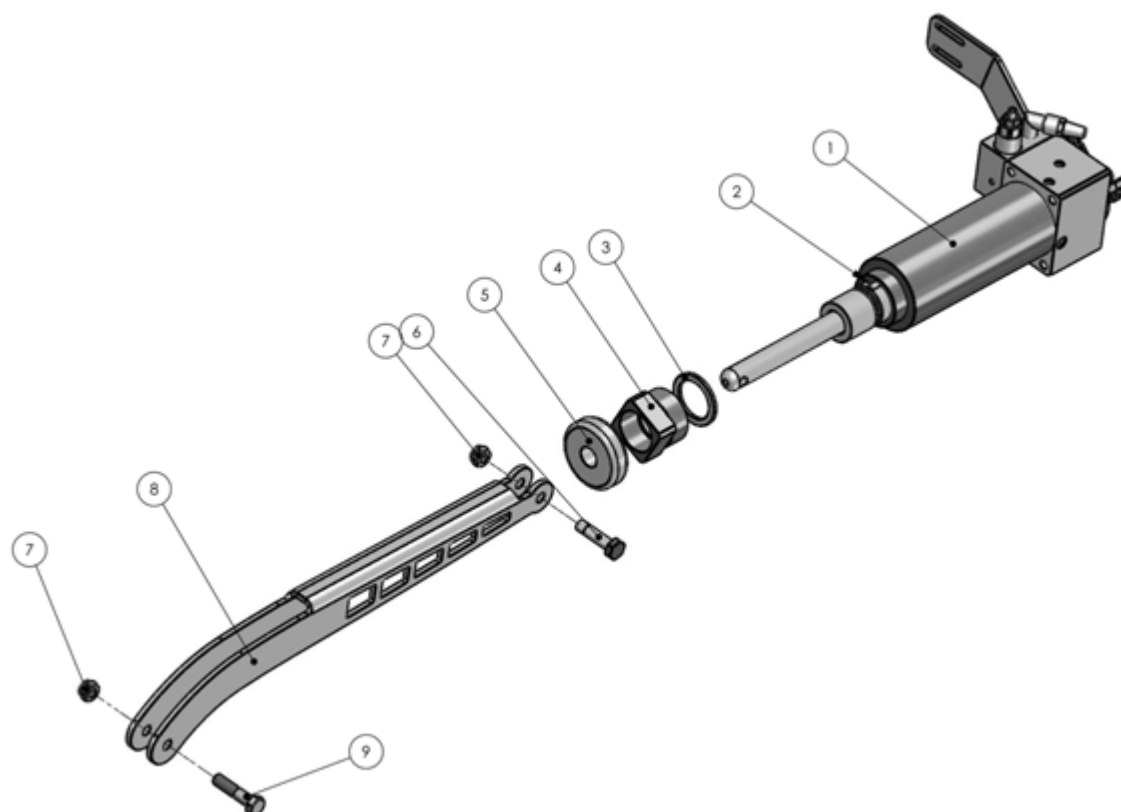
Impeller	Choker	Steering nozzle	Steering nozzle assembled
12"	10533 (D149)	10751D154	288F3
15-3"	10533 (D149)	10751D154	288F3
15-4"	10533 (D149)	10751D154	288F3
17"	10460 (D162)	10751D167	288F2

9. 288G Reversing deflector

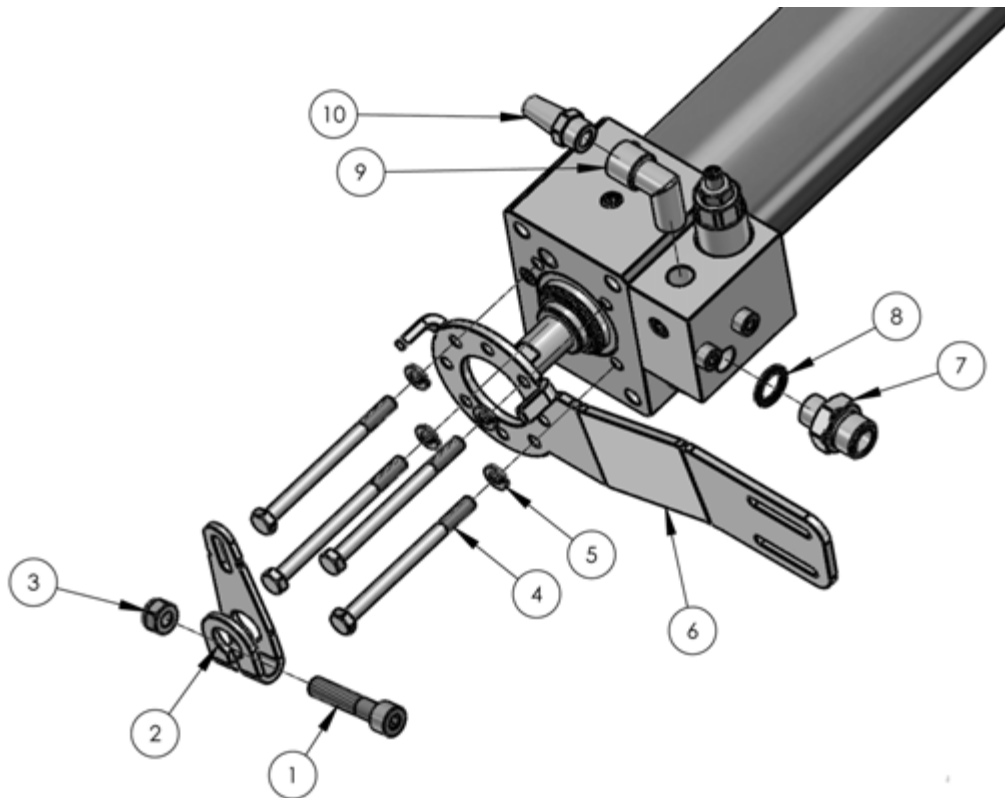


No.	Name	Code	Pcs
1	Reversing deflector	10392	1
2	Compound bearing	H0406	1
3	A4 sleeve	10027	1
4	Hex screw M10	R04100252	2
5	Zinc anode	10053	2
6	Tooth spacer M10	R12100002	2
7	Socket screw M8	R01080202	2
8	Zinc anode	10408	2
9	Tooth spacer M8	R12080002	2
10	Socket screw M10	R01100502	8
11	Joint peg	10267	2
12	Plastic bearing	H0405	2

10. 288H Hydraulic cylinder



No.	Name	Code	Pcs
1	Hydraulic cylinder	10295	1
2	Wedge	10429	1
3	Plastic spacer plate	H0304	1
4	Nut	10091	1
5	Zinc anode for shaft D20	K0538	1
6	Joint screw	10436	1
7	Locking nut M10	R31100002	2
8	Connecting rod	10296	1
9	Hex screw M10	R04100452	1

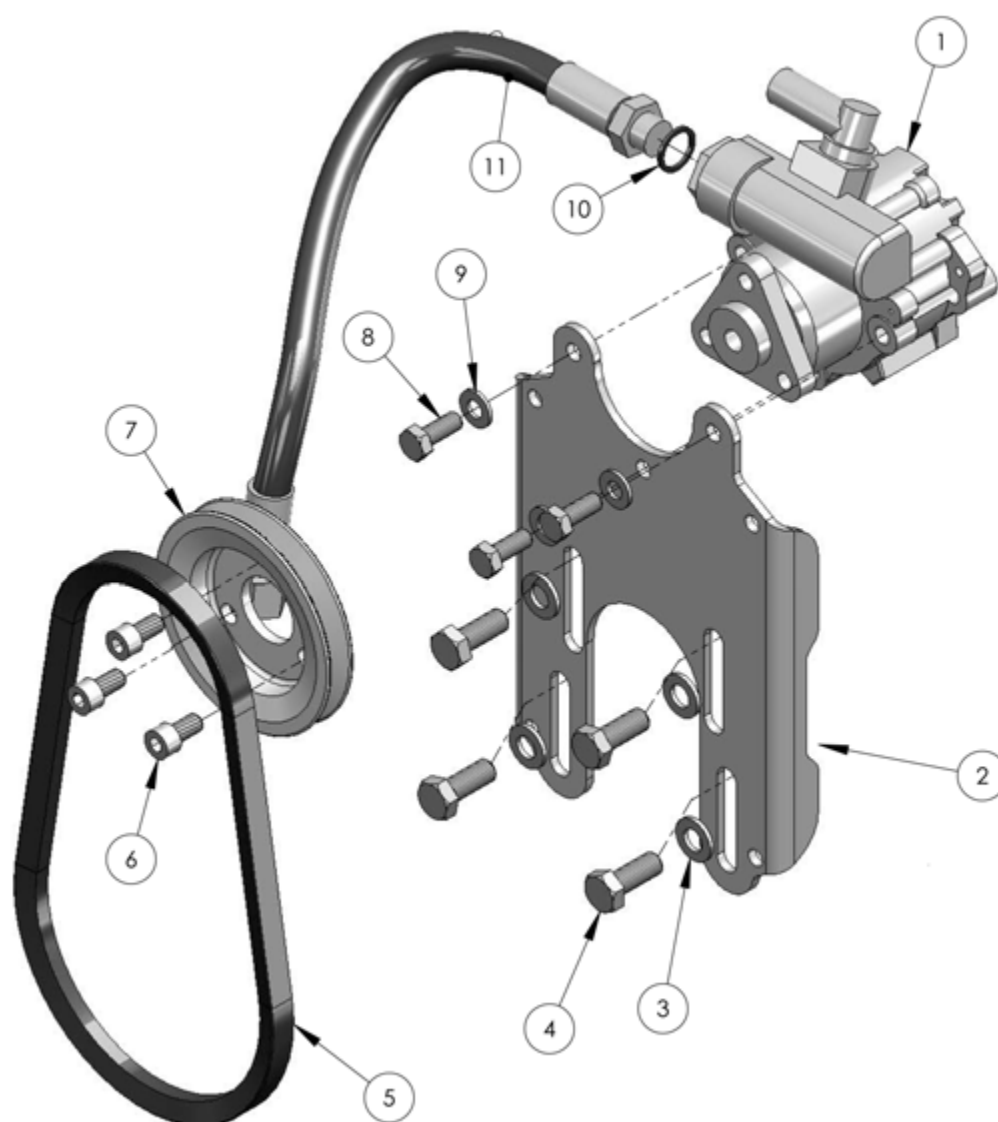


No.	Name	Code	Pcs
1	Socket screw M8	R01080402	1
2	Valve operating lever	10310	1
3	Locking nut M8	R31080002	1
4	Hex screw	R04060802	4
5	Spring washer M6	R13060002	4
6	Cable holder	10208	1
7	Reducing nipple	P0367	1
8	Copper seal	P0372	1
9	Bend	P0302	1
10	Hose shank	P0307	1

The code for the hydraulic cylinder bearing and seal kit is p9904 and it includes all the seals and bearings needed for cylinder repair.

11. 288I Hydraulic pump and oil reservoir

11.1. Hydraulic pump (10743)

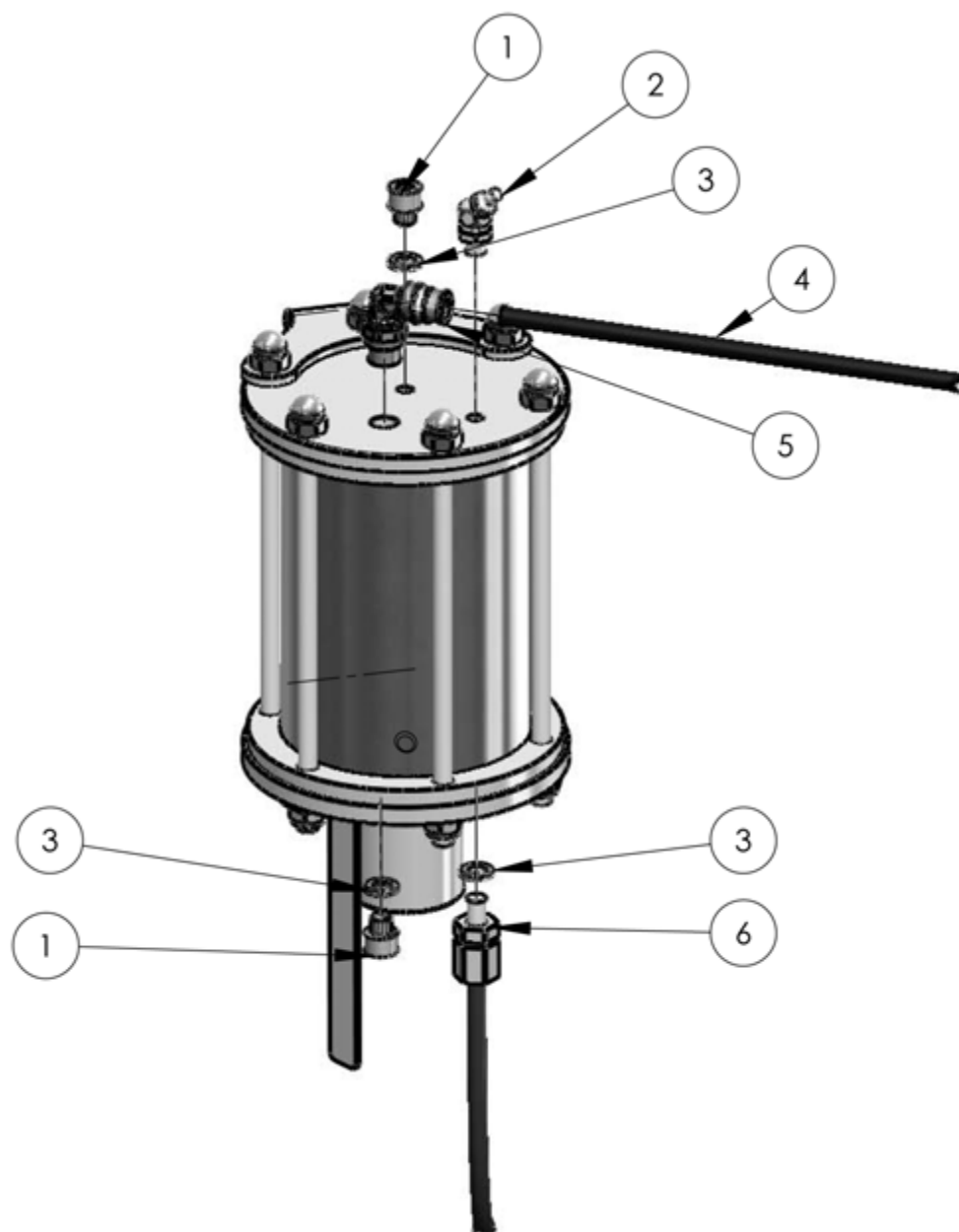


No.	Name	Code	Pcs
1	Hydraulic pump	5715	1
2	Oil pump rack	10407	1
3	Base plate M10	R10100002	4
4	Hex screw M10	R04100252	4
5	Wedge belt	5717	1
6	Socket screw M8	R01080162	3
7	Belt pulley	10093	1
8	Hex screw M8	R04080202	3
9	Base plate M8	R10080002	3
10	Copper seal	P0341	1
11	Pressure hose	P0115	1

11.2. Oil reservoir (10610)

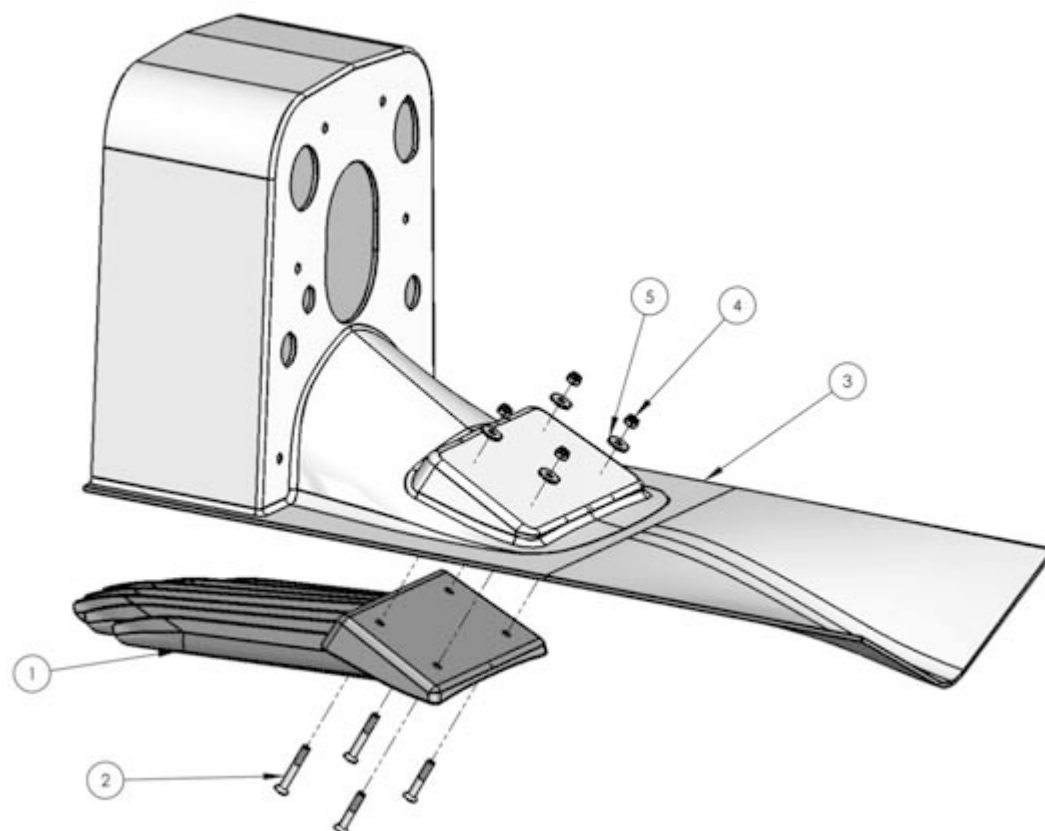
No.	Name	Code	Pcs
1	Oil reservoir rack	10543	1
2	Magnetic plug	P0346	1
3	Oil reservoir	10535	1
4	O-ring	T0000124	1
5	Oil reservoir cover	10536	1
6	Body spacer M5	R11050002	6
7	Spring washer M5	R13050002	6
8	Hex screw M5	R04050252	6
9	Oil reservoir cap	P0345	1

12. Automatic lubrication unit 288 (10482)



No.	Name	Code	Pcs
1	Socket screw M6	R01060062	2
2	Grease nipple	P0404	1
3	Copper seal	P0355	3
4	Lubrication hose	P0101	1
5	Elbow connector	P0504	1
6	Pressure hose	P9906	1

13. Grass rake and mounting template



No.	Name	Code	Pcs
1	Grass rake	10450	1
2	Socket screw M8	R02080602	4
3	Mounting template	*	1
4	Nyloc nut M8	R31080002	4
5	Body spacer M8	R11080002	4

* The code is determined by the material.
Reinforced Plastic: 10449
Aluminium: 10437

